

Circuit Safe® Pushbutton Enclosures

UL® Listed per UL 50 for Industrial Controls.

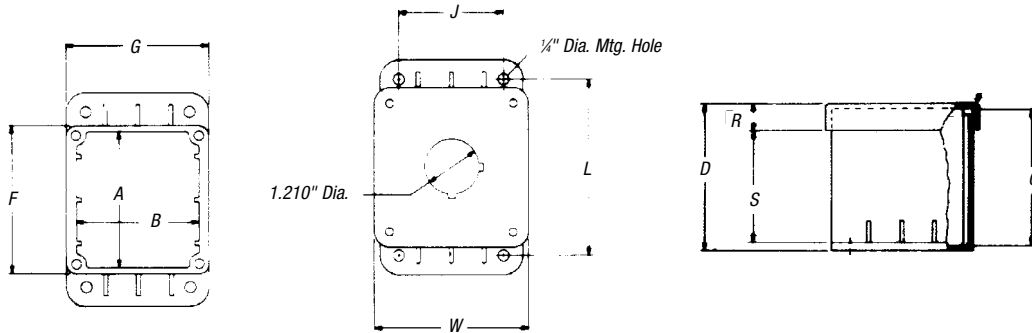


Screw Cover Enclosures with 1-2-3 Hole Openings

Wallmount pushbutton enclosures are molded from gray, engineered thermoplastic material that is resistant to most corrosive agents. Universal pushbutton holes are designed to accommodate all standard oil-tight pushbuttons, switches and pilot lights. A grounding plate is included on the cover. Auxiliary devices must be rated for appropriate NEMA applications.

Features:

- 30.5mm keyed pushbutton holes*
- Material: nylon base and cover
- Integrally molded mounting flange
- Brass screw inserts
- 304 (18-8) stainless screws (8-32/3/16")
- Temperature range: -40° to 185°F
- UL94-V2



30.5mm Pushbutton Enclosures †

CAT. NO.	STYLE	INSIDE BOX SIZE A X B X C	MOUNTING L X J	OVERALL OUTSIDE INCLUDING MOUNTING BRACKET H X W X D				F	G	R	S	STD. CTN.	STD. WT. (LBS.)
				H	W	X	D						
CP100N	One Opening	3.13 x 2.81 x 3	4 x 2.38	4.88	3.50	3.38	3.38	3.25	.63	2.5	12	9	
CP200N	Two Openings	5.38 x 2.81 x 3	6.25 x 2.38	7.13	3.50	3.38	5.63	3.25	.63	2.5	8	8	
CP300N	Three Openings	7.38 x 2.81 x 3	8.50 x 2.38	9.38	3.50	3.38	7.88	3.25	.63	2.5	6	7.60	

22mm Pushbutton Enclosures *†

CAT. NO.	STYLE	INSIDE BOX SIZE A X B X C	MOUNTING L X J	OVERALL OUTSIDE INCLUDING MOUNTING BRACKET H X W X D				F	G	R	S	STD. CTN.	STD. WT. (LBS.)
				H	W	X	D						
PX0010	One Opening	3.13 x 2.81 x 3	4 x 2.38	4.88	3.50	3.38	3.38	3.25	.63	2.5	10	8.26	
PX0007	Two Openings	5.38 x 2.81 x 3	6.25 x 2.38	7.13	3.50	3.38	5.63	3.25	.63	2.5	1	1.31	
PX0011	Three Openings	7.38 x 2.81 x 3	8.50 x 2.38	9.38	3.50	3.38	7.88	3.25	.63	2.5	6	9.43	
PX0008	Four Openings	7.38 x 2.81 x 3	8.50 x 2.38	9.38	3.50	3.38	7.88	3.25	.63	2.5	1	1.60	

* All Circuit Safe pushbutton enclosures are furnished with standard hole dimensions: 1 1/32" diameter with keyways at 12 o'clock and 3 o'clock

† Dimensions are in inches unless marked otherwise. Operators not included.